



The Logik roller banner is constructed from bamboo which together with its compact styling, makes it an unusual alternative to aluminium banners

Features & benefits

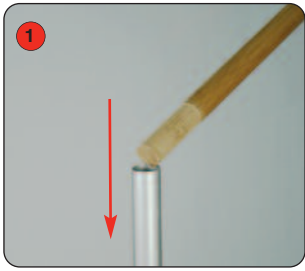
- Quick-change slider top rail
- Self adhesive quick applying graphic leader
- Twist out stabilising foot for extra stability
- Lightweight components
- Includes quality padded carry bag



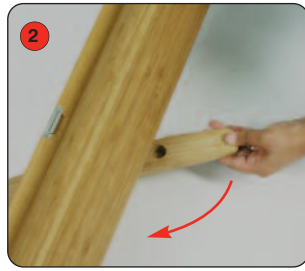
Hardware specifications	Graphic specifications	Additional info
<p>Hardware Dimensions (mm): 2110 (h) x 910 (w) x 340 (d) approx. (Depth dimension refers to twist out foot)</p> <p>Weight: 3.2kg approx (including carry bag)</p>	<p>Please refer to Graphic template</p>	<p>Included in kit: Top rail, base, 3 piece pole and carry bag</p>

Assembly Instructions

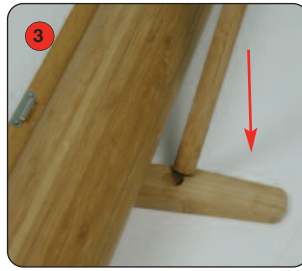
Banner stand assembly



Assemble the 3 part pole set.



Open out the stabilising foot.



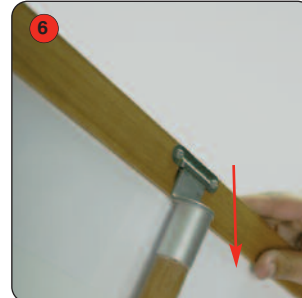
Fit the bungee pole into the stabilising foot.



Lift the top rail to raise the graphic from the base.



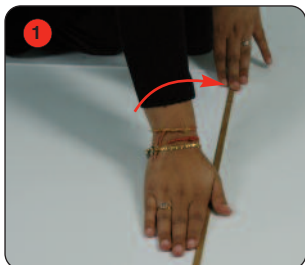
Lean the banner stand backwards and continue to extend the graphic.



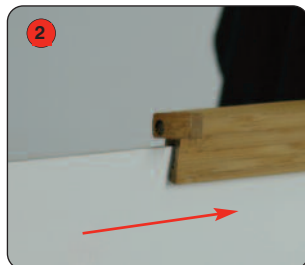
Secure the top rail onto the 3 piece pole.

Hold the Top rail whilst lowering the banner, (do not drop) to prevent damage to the graphic.

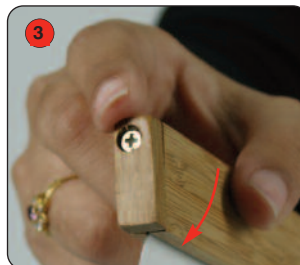
Graphic attachment instructions



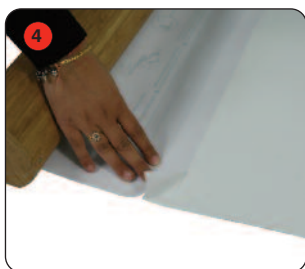
Peel the backing from the adhesive rail. Line the top rail with the graphic and press down firmly



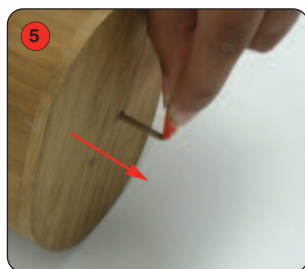
Slide the graphic squarely into the rail.



Rotate the end cap closed



Align and adhere the adhesive leader to the bottom of graphic. (attach to back of graphic)



Pull the pin from the roller banner making sure to keep hold of the graphic



Gently allow the graphic to retract.

After fitting, the graphic should be left for 24 hours before use, to ensure the adhesive bonds sufficiently.

Note: Opening the banner stand base may invalidate the product warranty.