

Hardware specifications

Assembled dimensions 2170mm (h) x 846mm (w) x 180mm (d) (mm)

Weight: 4.08kg Single sided 800mm
 4.68kg Double sided 800mm
 5.2kg Single sided 850mm
 5.8kg Double sided 850mm
 6kg Single sided 1000mm
 6.6kg Double sided 1000mm

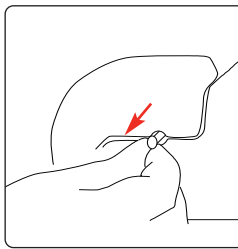
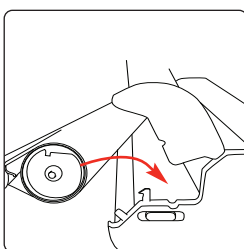
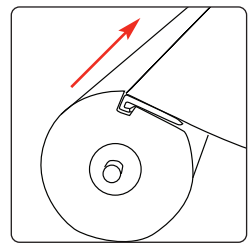
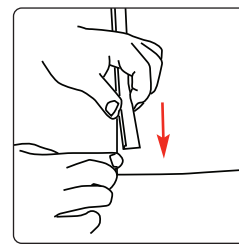
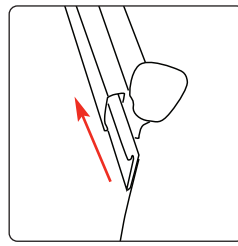
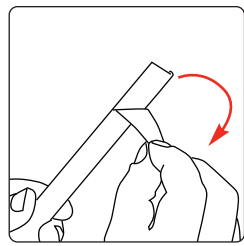
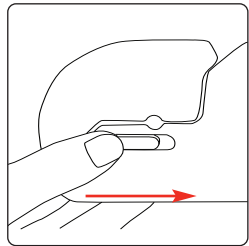
Graphic specifications/ additional info

Please refer to Graphic Template

Upgrade to additional cassette and rail doubler to convert to double-sided unit
 Code: UB501C- 800/850/1000

Attaching graphic

When attaching graphic sliders make sure the slider is attached to the front of the graphic for the graphic rail and to the back for the graphic cassette.



Note: Pull up on the graphic to release the roller mechanism

Note: When changing graphic please ensure you replace the pin into the roller before opening the banner