



Sleek styling coupled with the latest banner technology makes the Blade lightweight, portable and very easy to use.

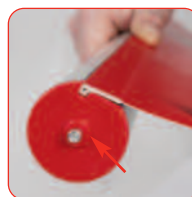
features & benefits

- New styling
- High specification finish including cast chrome metal end plates
- Access roller via flip-top lid
- Removable self-locking graphic roller mechanism
- Quick change graphic slider
- Adjustable feet on base, useful for example on uneven floors
- Premium carry bag
- Available in 850 and 1000mm widths
- Increased internal housing for thicker graphics (up to 450 microns*)
- Fixed height bungee pole

***Please test your substrate suitability before use**



**Universal grippa/
self-adhesive
top rail**



Slide-in Graphic



**3 piece corded
Bungee pole**



**Tensioner built into
roller mechsanim**



hardware specifications

Hardware Dimensions (mm):
2175 (h) x 895 (w) x 220 (d) approx.
Base Dimensions (mm):
75 (h) x 895 (w) x 220 (d) approx.
Weight:
4.82kg approx (including carry bag)
(850mm wide unit)

graphic specifications

Please refer to Graphic Template

additional info

Availability:
Anodised Silver
Included in kit:
Base, Bungee pole,
Universal grippa/self-adhesive
top rail and Carry bag

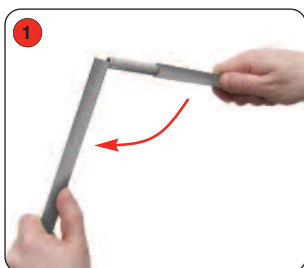
Assembly Instructions

Banner stand assembly

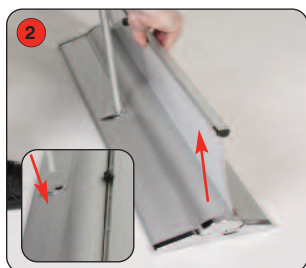


Kit includes:

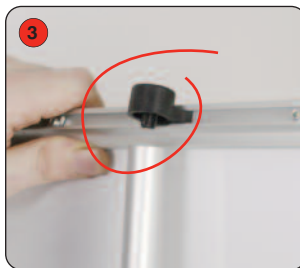
Base, Bungee pole,
Universal grippa/self-adhesive
top rail and Carry bag



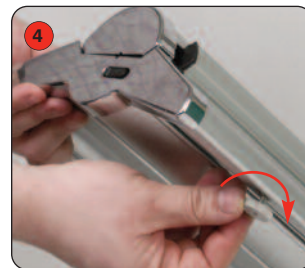
Open up and assemble the bungee pole.



Insert the pole into the base. Lift the top rail to raise the graphic from the base.



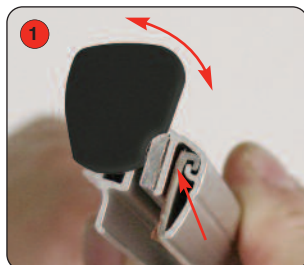
Secure the graphic into position by locating the top rail onto the bungee pole.



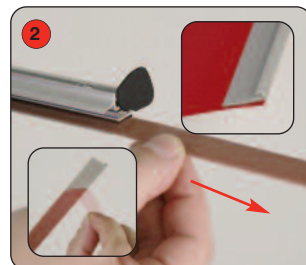
If required rotate the adjustable feet underneath the base.

Important: Hold the top rail whilst lowering the banner to prevent damage to the graphic. (do not drop)

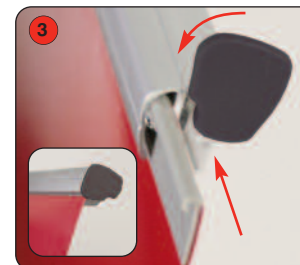
Graphic attachment - Adhesive rail option



Rotate the rail end cap to expose the plastic adhesive rail insert.

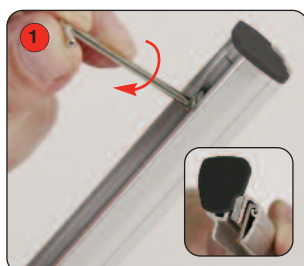


Slide the rail insert from the top rail. Adhere the insert to the front of the graphic.

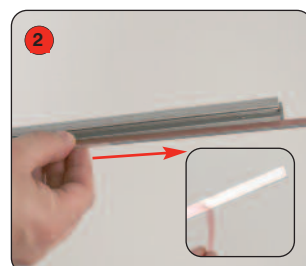


Slide the rail insert and graphic into the top rail. Close the rail end cap.

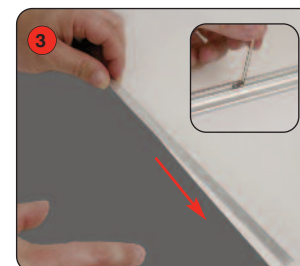
Graphic attachment - Grippa rail option (ideal for textiles and PVC)



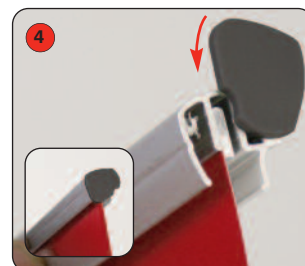
Using the Allen key stored in the base, loosen the top rail screws. Rotate the rail end cap to expose the steel flat bar.



Slide the flat bar from the top rail and remove the backing paper.

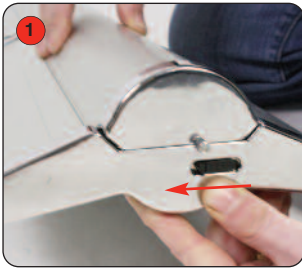


Adhere the flat bar to the back of the graphic. Slide the flat bar and graphic into the top rail. Tighten the screws to secure the top rail. Close the rail end cap.

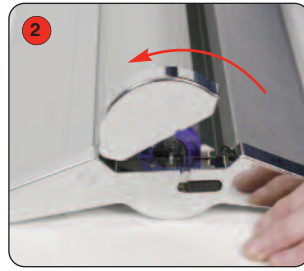


WARNING: Do not open the base lid without first checking to ensure the locking pin is in place.

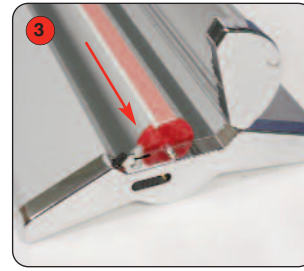
Graphic attachment - Base



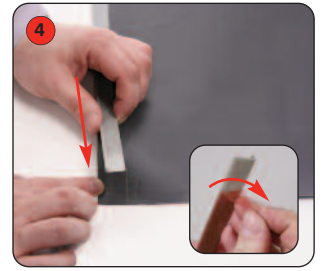
Slide the latches on either side of the base towards the back of the unit.



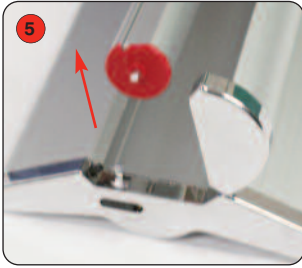
Rotate the lid to expose the roller mechanism.



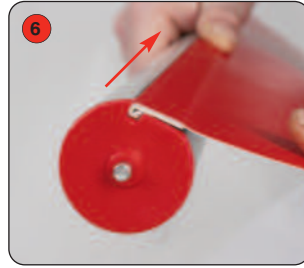
Slide the plastic insert strip off the roller mechanism.



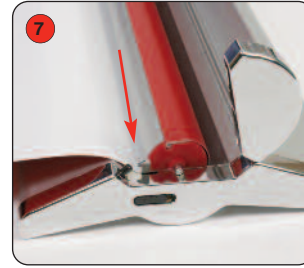
Adhere the insert strip to the back of the graphic.



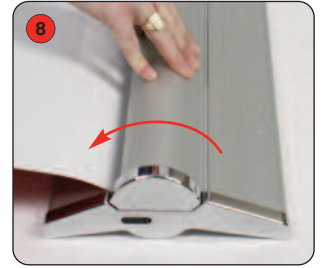
Lift out the roller mechanism.



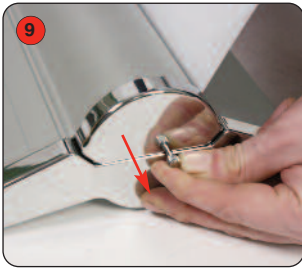
Slide the insert strip/graphic onto the roller mechanism.



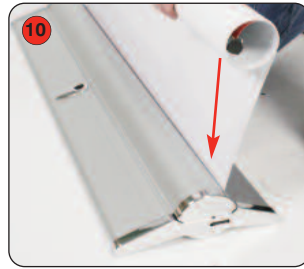
Fit the roller mechanism and graphic into the base.
Note position of the graphic.



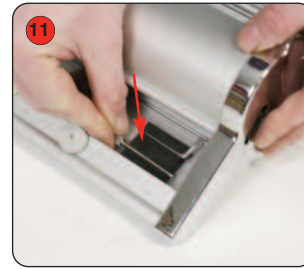
Close the lid.



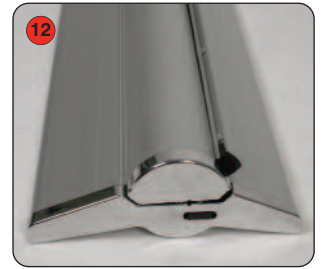
Remove the locking pin at opposite end of base **whilst holding the graphic.**



Pull the graphic up to release the roller mechanism and gently allow the graphic to retract into the base.
Do not drop to prevent damage to the graphic.



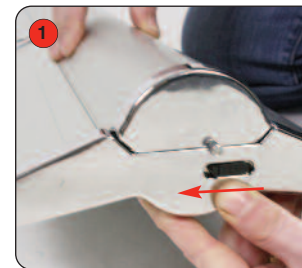
Place the locking pin into the storage area on the underneath of the base.



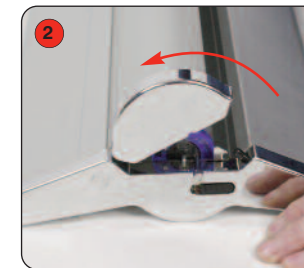
Banner is now ready for use.

WARNING: Always attach graphic to base and top rail correctly before removing the locking pin.

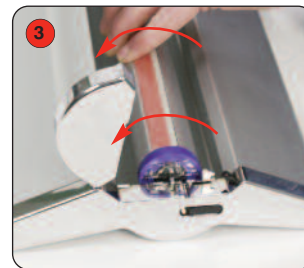
Re-tensioning the roller mechanism



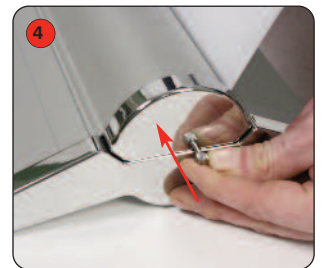
Slide the latches on either side of the base towards the back of the unit.



Rotate the lid to expose the roller mechanism.



If required remove the graphic from the roller. Rotate the roller towards the back of the base. 30 turns are required to fully re-tension the roller.



Fit the locking pin into the roller and close the lid.

After fitting, graphic should be left for 24 hours before use to ensure the adhesive bonds sufficiently.